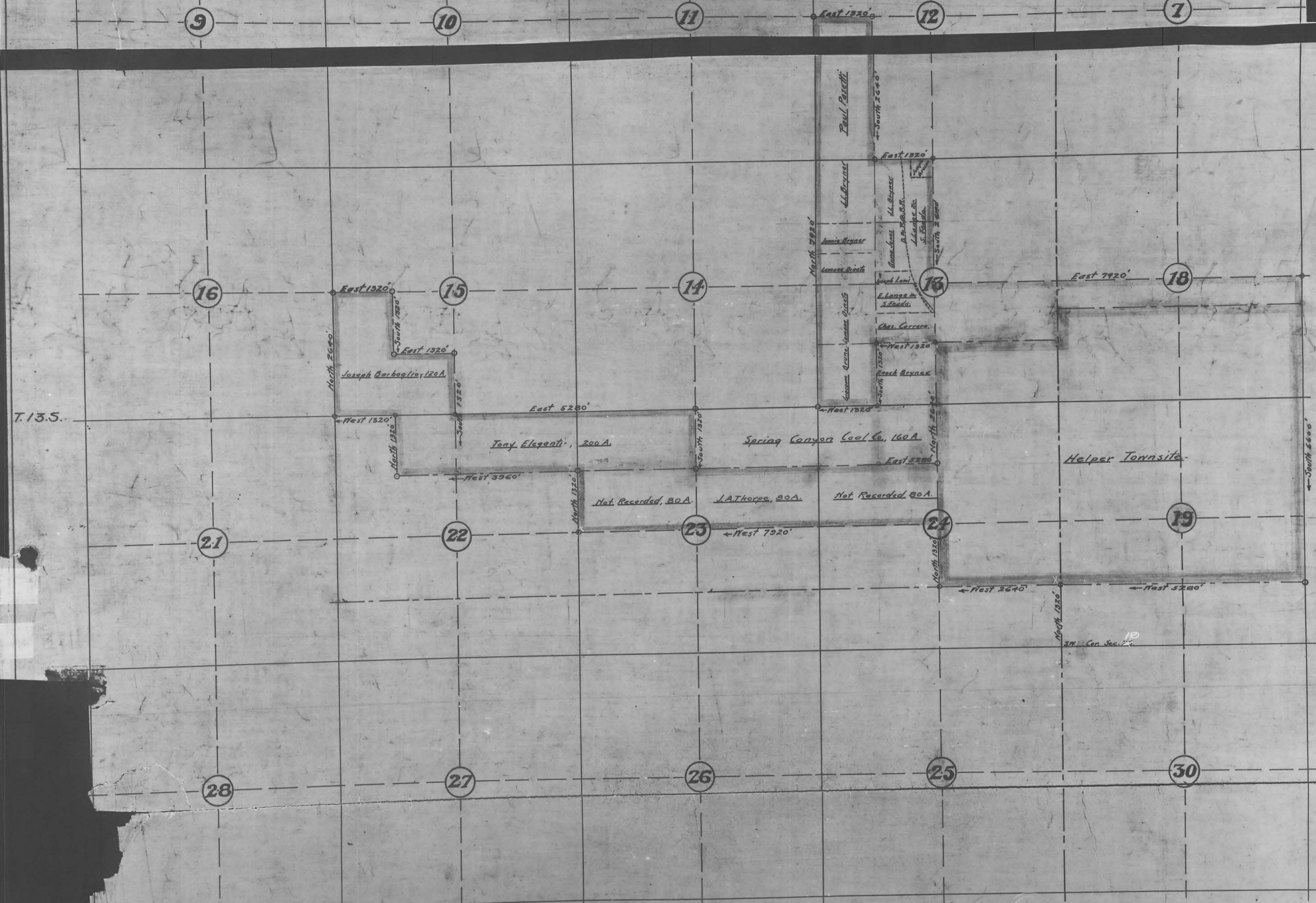


2 of
 three



T. 13 S.

Approved
 County Commissioners.
 President Town Board.
 Helper Town Board.
 Helper Town Clerk.

11835-
 FILED FOR RECORD
 2 APR 1913
 26

Surveyors Certificate.
 This certifies that this plat was made from records on file in the Carbon County Court House, Price, Utah. The land platted is described as follows, commencing at a point 1320 ft. N. of the S.W. Cor. Sec. 19 T. 13 S. R. 10 E. Thence N. 2640', Thence N. 1320', Thence N. 7920', Thence N. 1320', Thence N. 3960', Thence N. 1320', Thence N. 1320', Thence N. 2640', Thence E. 1320', Thence S. 1320', Thence E. 1320', Thence S. 1320', Thence E. 5280', Thence N. 2640', Thence N. 1320', Thence S. 1320', Thence N. 1320', Thence N. 7920', Thence E. 1320', Thence S. 2640', Thence E. 1320', Thence S. 2640', Thence E. 7920', Thence S. 660', Thence N. 5280', to place of beginning.

Map Showing Proposed Boundaries
 For Helper Townsite, Situated
 in Carbon County, Utah.
 April 13-13.
 Scale 1" = 1000'